



*Naturally
Inspired*

LANGKAWI
MEETINGS,
CONVENTIONS &
INCENTIVES

Naturally
LANGKAWI

www.naturallylangkawi.my



Kilim Mangrove Forest

SOUTHEAST ASIA'S MEETINGS PARADISE

Langkawi, the 'Isle of Legends' and 'Jewel of Kedah', is one of the world's great paradise island getaways. A magnet for international eco-tourism, Langkawi was designated a Global Geopark by UNESCO.

It is home to numerous tourist attractions and luxury hotels, yet it also retains its 'Old Malaysia' charm. And Langkawi has yet another impressive dimension to its résumé as a world-class destination for meetings, conventions and exhibitions.



UNRIVALLED VISTAS, VENUES – AND VALUE

Langkawi is the main island in an archipelago of 99 islands in the Andaman Sea situated off the coast of Peninsular Malaysia. Part of the Malaysian state of Kedah, it lies just south of Thailand and just east of Indonesian Sumatra – one of the world's truly magnificent backdrops for your next meeting, convention, or special event.

For just as surprising as the 5-star views and accommodation is just how affordable Langkawi is for your next corporate event.





LANGKAWI: FOR ALL THE RIGHT REASONS

If you're considering Langkawi as your next MICE destination, may we recommend you look past her white sand beaches, azure seas, magnificent rainforests, and discover the hidden beauty of these exotic facts and figures:

PERTINENT PARTICULARS

LANGUAGE

Langkawi's population, like Malaysia, is multiracial, hence multilingual. The national language is Bahasa Melayu; while English is almost universally spoken. Chinese (Mandarin and various dialects) and Tamil are also widely spoken.

CLIMATE

Tropical weather year round, with temperature ranging from 24°C–33°C.

CURRENCY

The Malaysian Ringgit (RM) is equal to roughly USD .30, or RM 3 = USD 1. The Ringgit is divided into 100 sen. The lowest denomination coin is 5 sen, hence all final prices in sen are rounded off to the nearest 5 sen. As exchange rates are constantly subject to fluctuation, check with your travel agent, bank, or go online for the latest exchange rate.

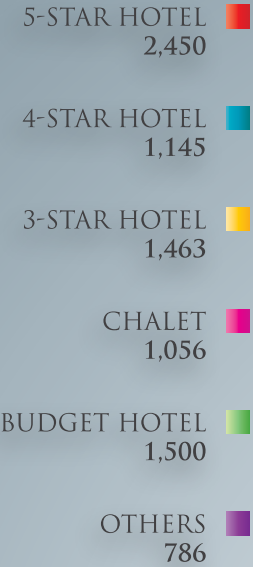
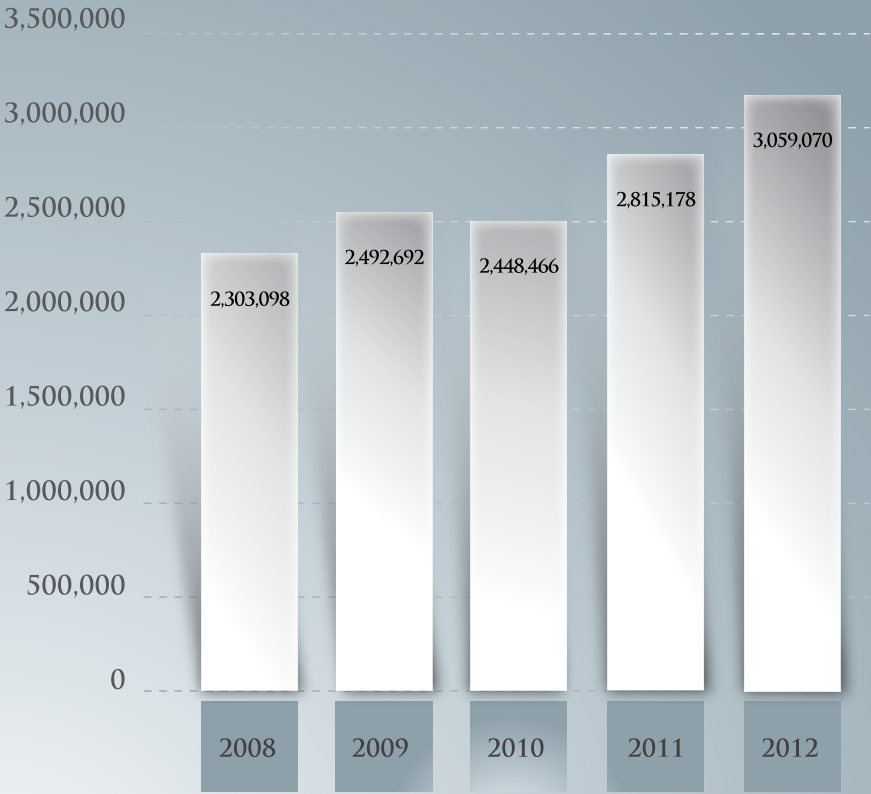
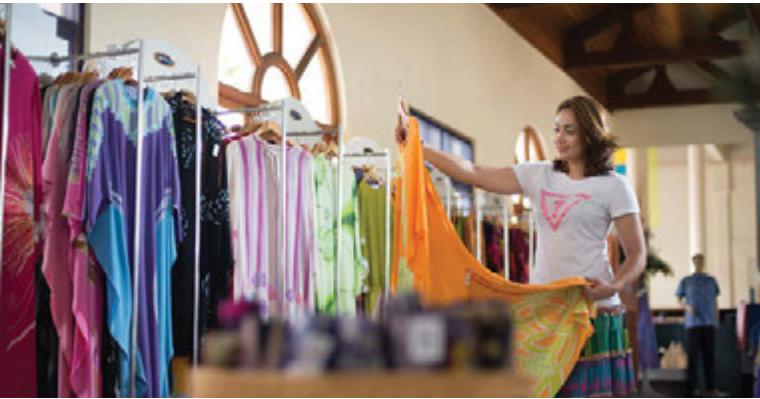
QUICK FACTS

The archipelago's total land area is 477 sq km. The main island of Langkawi comprises 319 sq km. Population as of 2010 was 155,262.

For a fuller picture, click on to www.naturallylangkawi.my

VISITOR STATISTICS

Langkawi has enjoyed impressive and sustained growth in tourist numbers and tourist spend within the past 25 years, a trend which has accelerated with such milestones as its being awarded duty-free island status, and later being designated a Global Geopark Site – the first in South East Asia.



ROOM AVAILABILITY

Langkawi boasts more than 8,600 rooms and suites available, from budget to 3, 4- and 5-star hotels and resorts.





Sunset at Sungai Cenang

ACCESSIBILITY

BY AIR

Getting to Langkawi by air is fast, easy and very affordable, with seven carriers and an average of over 168 scheduled flights per week.

	AIRASIA	
	KL	56 times / week
	SINGAPORE	7 times / week
	PENANG	7 times / week
	MAS	
	KL	36 times / week
	FIREFLY	
	SUBANG	21 times / week
	PENANG	7 times / week
	MALINDO	
	KL	14 times / week
	SUBANG	7 times / week
	BERJAYA AIR	
	SUBANG	4 times / week
	SILK AIR	
	SINGAPORE	4 times / week
	TIGER AIR	
	SINGAPORE	4 times / week

CHARTER FLIGHTS Flights to Langkawi International Airport fly from major airports worldwide.

BY SEA

For a more relaxed, more scenic and intensely satisfying experience, consider visiting Langkawi by sea! Ferry and speedboat service is available from several ports in Malaysia and Thailand, offering over 250 scheduled trips per week. Private and chartered yachts as well as cruise ships from around the world also make Langkawi their port of call. Langkawi boasts four marinas: the Royal Langkawi Yacht Club, Telaga Harbour Marina, Rebak Marina and ResortsWorld. All provide safe berths with world-class service facilities for visiting yachts. For enquires on cruise packages, contact your travel agent or cruise operator.

Ferry from **KUALA PERLIS, MALAYSIA**

Ferry from **KUALA KEDAH, MALAYSIA**

Ferry from **PENANG, MALAYSIA**

Ferry from **SATUN, THAILAND**

Ferry / Speed boat from **KOH LI PE, THAILAND**



Jetty Point, Kuah





Batik at Langkawi Craft Complex

INCENTIVES LANGKAWI – ON-SITE SUPPORT & BENEFITS

INTERNATIONAL CONVENTION & INCENTIVE GROUP

**For 80 pax and above of incentive group staying
minimum 3 nights**

- ☐ Cultural performances for convention
welcome reception at airport or hotel
- ☐ Dinner or high-tea
- ☐ Other assistance
- ☐ Promotional materials

DOMESTIC CONVENTION & INCENTIVE GROUP

**For 80 pax and above of incentive group staying
minimum 3 nights**

- ☐ Dinner or high-tea
- ☐ Promotional materials

LANGKAWI CHARTER FLIGHT INCENTIVE PROGRAMME (LCFIP)

LCFIP is a Malaysian government mandated programme that rewards lead charterers who choose to make Langkawi their destination of choice. It also rewards lead charterers based on total passenger load. Lead charterers are defined as either the chartering airline, the tour operator/organiser, or the travel agent.

Lead charterers can receive a cash reward of USD 10 per inbound passenger over the charter programme. Lead charterers that operate charter flights within the duration of the programme will receive funds based on the following tiers:



Pulau Singa Besar

SHORT TERM CHARTER

TIER	NUMBER OF CHARTER FLIGHTS	TOTAL FUND FOR AIRCRAFT CAPACITY OF LESS THAN 100 SEATS (USD)	TOTAL FUND FOR AIRCRAFT CAPACITY OF 100 SEATS OR MORE (USD)
1	5 flights or less	5,000	10,000
2	Between 6 to 9 flights	15,000	20,000
3	10 flights or more	25,000	30,000

LONG TERM CHARTER

YEAR	TIER	NUMBER OF CHARTER FLIGHTS	TOTAL FUND FOR AIRCRAFT CAPACITY OF LESS THAN 100 SEATS (USD)	TOTAL FUND FOR AIRCRAFT CAPACITY OF 100 SEATS OR MORE (USD)
Year 1	1	5 flights or less	5,000	10,000
	2	Between 6 to 9 flights	15,000	20,000
	3	10 flights or more	25,000	30,000
Year 2	1	5 flights or less	5,000	10,000
	2	Between 6 to 9 flights	15,000	20,000
	3	10 flights or more	25,000	30,000
Year 3	1	5 flights or less	5,000	10,000
	2	Between 6 to 9 flights	15,000	20,000
	3	10 flights or more	25,000	30,000

NOTE: This programme is valid until December 2015. Terms and conditions apply. Interested parties may visit www.malaysiaairports.com.my for further details. Registration and application forms can be downloaded from that site or from www.lada.gov.my/tourism

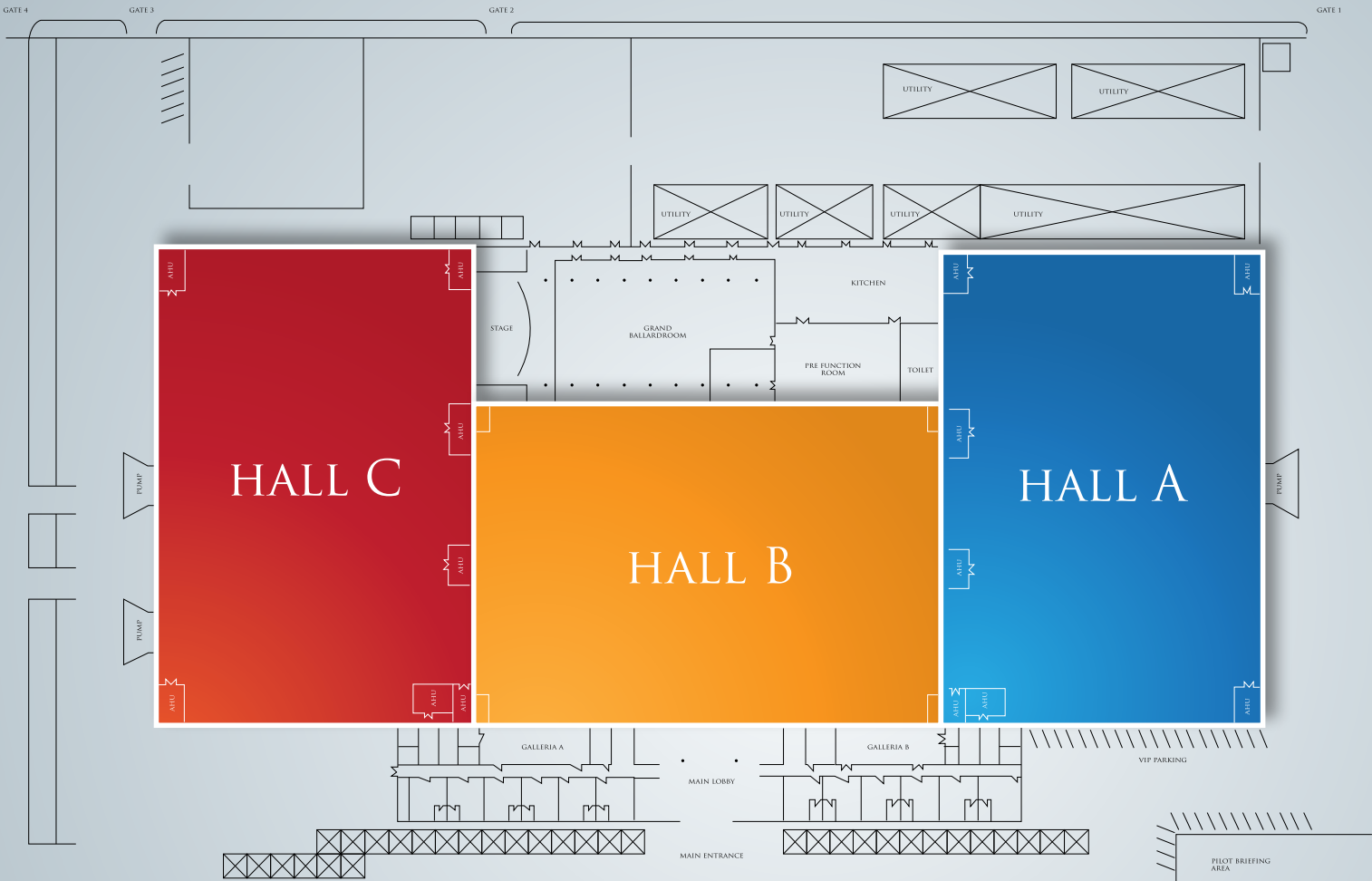
MIEC – THE MICE CHOICE

Named after a beautiful maiden – and Langkawi's most enduring legend – Mashuri International Exhibition Centre (MIEC) is the island's largest convention venue. Host to major international events, the state-of-the-art facility is conveniently situated adjacent Langkawi International Airport. It is also next to the modern 218-room One Helang Hotel, and just minutes from Pantai Cenang.

Considering all that it offers, as well as a paradise island setting, MIEC is unrivalled anywhere in the world for its affordability.



MIEC LAYOUT PLAN



CONVENTION & EXHIBITION FACILITIES

ROOM NAME	SPECIAL AMENITY	FLOOR (SQM)	BANQUET	COCKTAIL	CLASSROOM	THEATRE	U-SHAPE
GRAND BALLROOM	AUDIO ROOM TOILET	1534	1200	2200	1600	1800	800
PRE FUNCTION ROOM	KITCHEN	507	400	720	530	600	260
GALERIA 1	PANTRY	250	250	350	250	280	120
GALERIA 2	PANTRY	250	250	350	250	280	120
EXEC. LOUNGE (X6)	LIVING ROOM TOILET	80	20	35	18	35	-
SUITE. LOUNGE (X6)	PRIVATE OFFICE ROOM, LIVING ROOM, TOILET, SHOWER, BATH TUB	96	20	40	20	40	-
VIEWING DECK	-	315	-	-	-	-	-
EXHIBITION HALL A	TOILET	9381	-	-	-	-	-
EXHIBITION HALL B	TOILET	7350	-	-	-	-	-
EXHIBITION HALL C	TOILET	6784	-	-	-	-	-



MIEC OFFERS:

- ☐ 40,000 sq ft, of convention and exhibition space
- ☐ 3 halls, rented individually or in combination
- ☐ State-of-the-art A/V and high-speed broadband internet connection
- ☐ 18 hectares parking

MIEC HIGHLIGHTS

Mahsuri International Exhibition Centre is renowned as the venue for large-scale, high-profile international events including:

- ☐ Langkawi International Maritime and Aerospace Exhibition (LIMA; biennially since 1995)
- ☐ International Federation of Muay Thai (2014)
- ☐ First Regional Geopark Conference (2008)
- ☐ International Motor Show (2007)
- ☐ ASEAN Tourism Forum (2005)

LIMA – TOP FLIGHT PRESTIGE, INTERNATIONAL RECOGNITION

The Langkawi International Maritime and Aerospace Exhibition (LIMA) is one of the world's premier events for aerospace and maritime manufacturers. Held at MIEC as primary venue, along with the nearby Tanjung Malai, this biennial five-day event has been drawing visitors, kudos and international media coverage for nearly a quarter century. LIMA is also the only exhibition that combines air and sea components, and covers defense, enforcement, civil and commercial sectors.



LANGKAWI INTERNATIONAL CONVENTION CENTRE (LICC) - A STUNNING NEW VENUE WILL SOON MAKE ITS DEBUT

Langkawi will soon have yet another reason for being the premier island choice for your next meeting, convention or special event: the brand new Langkawi International Convention Centre (LICC) is scheduled to open its doors in the first quarter of 2015. The beautiful 8.45-acre facility showcases a modern, low-profile design so as to blend in harmoniously with its green surroundings.

Situated at Pantai Beringin, across from the Westin Resort & Spa, LICC will offer a choice of four ballrooms, five meeting rooms, an outdoor function area, and two large pre-function spaces, as well as two VIP suites, a press room, and more, comprising 5,578 sqm of usable floorspace.

LICC... Just one more reason Langkawi is the natural choice for your next corporate event.



Front Entrance View



Ballroom



Sideview Layout



Facade with Porte Cochere



Aerial View

All images are artist's renderings



5-STAR ACCOMMODATION

THE ANDAMAN LANGKAWI, A LUXURY COLLECTION RESORT

TELUK DATAI ★★★★★

Succumb to the island's most beautiful and secluded bay, where The Andaman sets the benchmark for luxury eco-tourism with an emphasis on privacy and privilege. Nestled within the ancient rainforest of Machinchang Cambrian Geoforest Park, the Hotel also fronts a spectacular beach including a fish-abundant coral reef. An ideal retreat for business travelers, featuring four outstanding restaurants and two lounges. Luxuriate and rejuvenate in V Botanical Spa.

MEETINGS

- Ballroom with maximum capacity 900 pax
- 8 function rooms
- 24-hour Business Centre
- Outdoor beach dinner

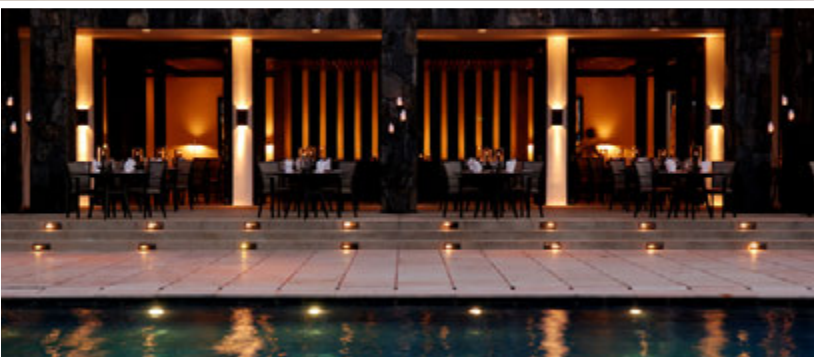
T +604 959 1088 / 603 2717 9110

F +604 959 1168

E sales.andaman@luxurycollection.com

W www.luxurycollectiondestinations.com





THE DATAI LANGKAWI, A MEMBER OF LEADING HOTELS

TELUK DATAI ★★★★★

Solitude was never so sweet. Or exclusive. This grand luxury retreat harks back to the finest tradition of exotic Eastern refinement, beauty, and service. Immersed in an ancient virgin rainforest, yet within sight sound, walk to a beach and a sparkling bay ranked among the finest in the world. The Datai is the choice of celebrities, heads of state, and those who crave a world-class retreat in an idyllic setting second to none. Culinary nirvana awaits at The Pavilion and the open-air Gulai House.

MEETINGS

- ☐ 72 sqm meeting room fully equipped with built-in presentation screen and wireless internet connectivity
- ☐ Full and half-day meeting packages available

T +604 9592500
F +604 959 2602
E infodataiLangkawi@dataihotels.com
W thedatai-langkawi.com



BERJAYA LANGKAWI RESORT

TELUK BURAU ★★★★★

Berjaya Langkawi Resort unfolds over 70 lush acres cocooned in a rainforest sanctuary, the majority of its 350 rooms and suites set dramatically over the sparkling waters of Teluk Burau. The Resort offers a breathtaking scope of recreational facilities and activities, plus numerous sea sports. With no less than nine restaurants and bars, including signature Japanese, Chinese, and Thai restaurants. Taaras Spa offers a wealth of treatments and pampered pleasures.

MEETINGS

- ☐ Matsirat Ballroom with maximum capacity 900 pax
- ☐ 8 function rooms

T +604 959 1888
F +604 959 1886
E langkawi.rsvn@berjahotel.com
W www.berjahotel.com

THE DANNA LANGKAWI PANTAI KOK ★★★★★

Set against a stunning island backdrop on one side, and fronting Telaga Harbour, the picturesque yacht marina, The Danna Langkawi updates the architectural elegance and sophistication of the Colonial era with a dash of Mediterranean ambiance. 125 sumptuous suites, king size bed, separate rainforest shower and bathtub. Dine at Planter's signature restaurant, or The Straits & Co for quintessential British-Malay cuisine. The Danna Spa, Danna Fitness Centre, 3-tier infinity pool and private white sand beach.

MEETINGS

- ☐ 1 function hall maximum capacity 100 pax
- ☐ Boardroom (14 persons)
- ☐ Beach & breezeway (150 pax each)
- ☐ Verandah (80 pax)

T +604 959 3288
F +604 959 3188
E info@thedanna.com
W www.thedanna.com



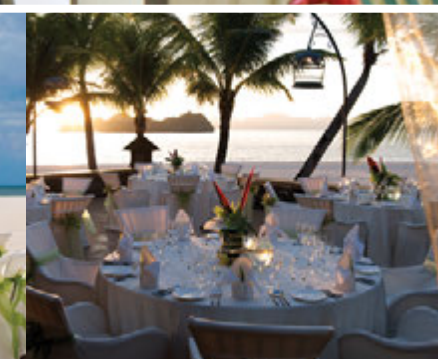
FOUR SEASONS RESORT LANGKAWI TANJUNG RHU ★★★★★

Legendary Four Seasons service and luxury showcase an ultra-new dimension on the captivating cape of Tanjung Rhu. Featuring 91 opulent, residential-style pavilions and villas fronting a white sand beach, beyond which jagged karst islands dot the blue Andaman Sea, while next door a 8,261-hectare mangrove forest – an official UNESCO Geosite – await exploration guided by our in-house naturalist. Gourmet dining at four different venue options. Heavenly treatments of Geo Spa

MEETINGS

- ☐ 3 function rooms with maximum 70 pax
- ☐ 4 workstations with computers, printers, highspeed internet access
- ☐ Secretarial services available
- ☐ 24-hour business services

T +604 950 8888
F +604 950 8899
E reservations.lan@fourseasons.com
W www.fourseasons.com/langkawi





TANJUNG RHU RESORT LANGKAWI

TANJUNG RHU ★★★★★

Perhaps the most scenic and tranquil location on the island, and adjacent the UNESCO-designated Kilim Karst Geoforest Park, Tanjung Rhu Resort is more than a luxury resort; it's a Langkawi icon and byword for luxury amidst nature's splendour. Impeccable service combined with stunning views spread over 2.5km of white sand beach provide a haven of privacy that has earned it a reputation as one of South East Asia's premier boutique resorts. The Rhu, Saffron, Sands – each a gustatory and atmospheric revelation.

MEETINGS

- ☐ 1 function room with maximum capacity 100 pax
- ☐ Outdoor beach dinner

T +604 959 1033
F +604 959 1899
E resort@tanjungrhu.com.my
W www.tanjungrhu.com.my



BY TAJ - VIVANTA REBAK ISLAND

PULAU REBAK ★★★★★

A luxury hotel on its very own island. Away from it all, yet just minutes to the main island of Langkawi. Welcome to Rebak Island Resort. Blessed with pristine, secluded beaches, stunning rock formations, and lush forest. Arrive at Langkawi airport and take the 5-minute drive down to the jetty, then on to a waiting boat that whisks you to Rebak Island. Timbered villas, landscaped by an internationally acclaimed tropical designer. Jiva is Taj's award-winning, Spa. Two restaurants, including Allegria, specialising in Goan cuisine.

MEETINGS

- ☐ Meeting room capacity 100 pax
- ☐ Outdoor beach dinner 200 pax

T +604 966 5566
F +604 966 9973
E rmresv.malaysia@tajhotels.com
E rmmarina.malaysia@tajhotels.com
W www.tajhotels.com



SHERATON LANGKAWI BEACH RESORT PADANG MATSIRAT ★★★★★

Seaside luxury beckons at Sheraton Langkawi Beach Resort, featuring 238 guestrooms. All with private balconies. 32" LCD TV and generous workspaces. The Spa offers a unrivalled pampering in an unforgettable setting. Guests also have access to the white-sand beach and Langkawi's largest infinity pool at Four Points by Sheraton Langkawi Resort. Free shuttle service to the sister resort. With six restaurants and bars, guests also enjoy the convenience of cross-charging food and drinks at any restaurant or bar located at the Four Points by Sheraton Langkawi Resort.

MEETINGS

- ☐ Ballroom with maximum capacity 350 pax
- ☐ Outdoor beach dinner for 250 pax

T +604 952 8000
F +604 952 8050
E langkawireservations.00281@sheraton.com
W www.starwoodhotels.com



MERITUS PELANGI BEACH RESORT & SPA PANTAI CENANG ★★★★★

Set on 35 plush acres on 1 km of white sand beach, Meritus Pelangi Beach Resort & Spa offers a modern contemporary take on traditional Malay kampung or (village) architecture, with 51 luxurious chalets raised on stilts, and featuring spacious verandahs and sumptuous interiors. With stunning beach and mountain views, Leisure Centre with swimming pool, gym, and Pelangi Spa. Superb restaurant and lounge venues, plus special beach BBQs. Meritus Club rooms include Lounge with free breakfast and evening cocktails.

MEETINGS

- ☐ Pelangi Grand Ballroom with max. capacity 700
- ☐ 9 function rooms

TF 1 800 81 5525
T +604 952 8888
F +604 952 8899
E pelangi@meritushotels.com
W www.meritushotels.com





THE WESTIN LANGKAWI RESORT & SPA

KUAH ★★★★★

Discover where the stunning tropical beauty of Langkawi and the opulence and impeccable service of Westin come wonderfully together. Situated on a hill with dramatic sea and island views, and overlooking its own private beach, The Westin Langkawi offers 202 lavish rooms, and suites, including residential-like one, two and five-bedroom enclaves. You'll be spoiled for choice, be it swimming pools (four), or divine dining (seven outlets, seven stunning taste experiences!). And for a truly transformative spa treatment, there's Heavenly Spa By Westin™.

MEETINGS

- ☐ 6 elegant conference & banqueting venues
- ☐ Ballroom for a maximum of 200 persons (banquet seating)
- ☐ 4 breakout rooms (max. 30 pax)

TF 1 800 80 1853
 T +604 960 8888
 F +604 966 6414
 E westin.langkawi@westin.com
 W www.westinlangkawi.com



BAYVIEW HOTEL KUAH ★★★★★

Centrally located in the heart of Kuah, just steps from great duty-free shopping, eateries and pubs, and offering breathtaking views of harbour and town, Bayview provides 'luxury as standard issue'. Features large outdoor swimming pool and Jacuzzi, gym with steam room, Chinese restaurant, 24-hour coffee shop and lounge with live entertainment.

MEETINGS

- ☐ Grand Ballroom with maximum capacity of 800 pax
- ☐ 9 meeting and function rooms
- ☐ Full and half-day packages

T +604 966 1818
F +604 966 3888
E bayviewlangkawi@bayviewhotels.com
W www.bayviewhotels.com/langkawi



FOUR POINTS BY SHERATON LANGKAWI RESORT PADANG MATSIRAT

214 rooms with stunning views, sitting room, and at least 43 sqm of space; perfect for an idyllic luxury seaside getaway. All rooms feature LCD flat screen TV, and bathroom with separate areas for bathtub and rainforest shower. Fronts 1 km long white-sand beach, and includes Langkawi's largest infinity pool. The Eatery offers all-day dining. Guests can cross-charge food and drinks at any Sheraton Langkawi Beach Resort outlets. Free shuttle service to sister resort.

MEETINGS

- ☐ Grand Ballroom with maximum capacity of 400 pax
- ☐ Meeting room accommodates up to 90 guests
- ☐ 71 sqm pre-function space for cocktail functions

T +604 952 7000
F +604 955 5888
W www.starwoodhotels.com/fourpoints





HOLIDAY VILLA BEACH RESORT & SPA LANGKAWI

PANTAI TENGAH ★★★★★

Nestled on 13 prime beachfront acres, Holiday Villa Beach Resort & Spa exudes tropical luxury amidst ocean breezes and alluring sunsets. 258 guestrooms, chalets and apartment suites provide a variety of accommodation choices. Lagenda Restaurant offers 24-hour service, Mario's for Italian specialties. With large free form swimming pool, ladies' pool, kids' pool, gym, fitness centre, internet room. Amoras Relaxation Spa specialises in traditional Balinese treatments.

MEETINGS

- ☐ Crystal Ballroom with maximum capacity of 230 pax
- ☐ 3 meeting rooms
- ☐ Full and half-day packages

T +604 952 9999
F +604 955 1504 / 2211
E reservation@lgkhvl.com
W www.holidayvillahotellangkawi.com



ONE HOTEL HELANG LANGKAWI

PANTAI CENANG ★★★★★

Just a five-minute walk from Langkawi International Airport and three minutes from Mahsuri International Exhibition Centre, this Hotel caters to the business community as well as family holiday makers. The 218 tastefully furnished guestrooms and suites are spacious, starting from Deluxe Queen, Deluxe King, Deluxe Suite, and Executive Suite. Facilities include large swimming pool and children's pool. The Lobby Terrace Restaurant offers a wide variety of western and Asian favourites.

MEETINGS

- ☐ Garuda Ballroom can accommodate 400 to 600 pax
- ☐ 9 meeting rooms (2 can be converted to function rooms with maximum capacity for 200 pax)

T +604 955 3030
F +604 955 2030
E sales@onehotelhelang.com
W www.onehotelmalsysia.com

RESORTS WORLD LANGKAWI PANTAI TENGAH ★★☆☆

Resorts World Langkawi puts you right in the centre of things. The resort is situated on a marina, with its own jetty and overlooks the sparkling Andaman Sea and nearby Pulau Dayang Bunting (Island of Pregnant Maiden). The Mediterranean-inspired design is highlighted by an iconic (lighthouse) to guide travelers to this getaway and refuge for relaxation, recreation and rejuvenation. Offering stylish sea-and-garden-view guestrooms and suites. Seagull Coffee House, Lobby Lounge, and Zest Restaurant with outdoor boardwalk seating. Taman Sari Spa features traditional Javanese massages and treatments.

MEETINGS

- ☐ Grand Ballroom with maximum capacity of 700 guests
- ☐ 6 meeting rooms plus multi-purpose hall seats from 15 to 30 pax
- ☐ Corporate and government meeting packages

T +604 955 5111
F +604 955 5222
E waznati.ishak@rwlangkawi.com
W www.rwlangkawi.com



ALSO RECOMMENDED





SRI CENANG SPA & RESORT PANTAI CENANG

This luxury boutique resort comprises six villas, with six variations of the traditional Malay house, each representing a different regional architectural style. Includes infinity pool, gym, art gallery, boutique store, and Kayangan Spa.

TF 1 300 88 7275
T +604 955 8275
F +604 955 8277
E stay@serichenangresort.com
W serichenangresort.com



KAMPUNG TOK SENIK RESORT ULU MELAKA

A hotel that has tastefully captures the charm and ambiance of a traditional 'kampung' or Malay village, set in the midst of a lush, tranquil atmosphere surrounded by nature. Landscaped outdoor swimming pool, CNN Pool Café, and Warung Tok Mat coffeehouse for all-day dining.

T +604 955 7288
F +604 955 7257
E toksenik@yahoo.com.my
W www.toksenikresort.com



THE FRANGIPANI LANGKAWI RESORT & SPA PANTAI TENGAH

This eco-friendly resort on 22 lush acres has won several prestigious awards to date, including the ASEAN Green Award 2012/2014, the Anugerah Langkawi 2010/2011 and was listed among the top 25 Relaxation/Spa Hotels in Malaysia in TripAdvisor Travellers' Choice 2012. Offers banquet/meeting facilities for up to 100 pax.

T +604 952 0000 / +6013 496 1754
F +604 952 0001
E rsvn@frangipanilangkawi.com
W www.frangipanilangkawi.com



BELLA VISTA WATERFRONT RESORT & SPA KUAH

With turrets and regal architecture reminiscent of the grandeur of an English Tudor castle or French chateau, Bella Vista is a little of both. A wide selection of room types, from Deluxe to Executive Suite, Duplex Suite and Studio Deluxe. Ballroom for 300 pax, restaurant conversion to ballroom for up to 600 pax, plus conference rooms, meeting facilities, and business centre.

T +604 966 2800
E sales@bellavistalangkawi.com
W www.bellavistalangkawi.com



LANGKAWI SEAVIEW HOTEL KUAH

Nestled in a quiet enclave off the seafront, and with fabulous town and harbor views, Langkawi Seaview affords a relaxing and rewarding stay. Rooms are spacious and comfortable, with private balcony and free in-room WiFi internet access. With 7 meeting and function rooms, fully equipped with the latest A/V system.

T +604 966 0600
F +604 966 0620
E sales@lseaview.com
W www.langkawiseaviewhotel.com



GRAND CONTINENTAL HOTEL KUAH

The Hotel's 195 rooms and suites include Superior, Deluxe and Junior Suites. All rooms offer unlimited WiFi broadband access, and there are non-smoking floors upon request. Includes Sri Dayang Coffee House, Dewan Enggang, conference, seminar & banqueting facilities, and secretarial services.

T +604 966 0333
F +604 966 0288
E langkawi@ghihotels.com.my
W www.ghihotels.com.my



CITIN HOTEL KUAH

Citin Langkawi offers affordable comfort in modern simplicity with its strategic location at the heart of Kuah. Duty-free shopping, a wide choice of eateries, a night market and shopping malls are all just a walk away. Also 5 minutes away is the main jetty point for ferries to and from the island. The 46 comfy guestrooms in Superior Queen or Superior Twin include 22" Samsung LCD Screen TV with satellite channels.

T +604 966 9000
F +604 966 9001
E enquiry@citinlangkawi.com
W www.citinlangkawi.com



LANGKAWI SHELL SITES

For other creative, out-of-the-ordinary, and one-of-a-kind venues for more adventure, more excitement, more entertainment, or perhaps for smaller, more intimate gatherings – **Naturally Inspiring** offers still more unrivalled options, or ‘Shell Sites’.

Whether for a corporate event, birthday, wedding, anniversary or cocktail party, these popular island tourist attractions can also be reserved exclusively for private functions, and promise to make your event even more special and memorable.

EAGLE SQUARE

Meet, greet, mingle and eat under the majestic wings of Langkawi’s most iconic monument, at the harbourfront in Kuah.

- Activities: Cocktail reception, dinner, concert
- Capacity: 15,000 – 20,000 pax



GUNUNG MACHINCHANG/ CABLE CAR TOP STATION

Ascend Gunung Machinchang on the famous Langkawi SkyCab, the ultimate cable car adventure. The 2km journey is one of the world’s steepest, and the peak, at 713 m, offers spectacular 360-degree views of the archipelago and southern Thailand.

- Activities: Cocktail reception, wedding reception, movie set
- Capacity: 100 pax



AYER HANGAT SPA VILLAGE

Wellness therapy with a distinctly local touch, which soothes and rejuvenates from several small pools and a salt-water Jacuzzi.

- Activities: Cocktail reception, dinner
- Capacity: 130 (cocktail), 150 (dinner)

ORIENTAL VILLAGE

Overlooking Burau Bay is one of the region’s most unique shopping, cultural and culinary destinations. Specially designed to provide a new concept in resort duty-free shopping, Oriental Village also houses fine themed restaurants.

- Activities: Cocktail reception, wedding reception, movie set, team building
- Capacity: 100 pax





GALERIA PERDANA

The gallery houses the many awards, souvenirs and gifts given to Malaysia's fourth and longest-serving Prime Minister, Tun Dr. Mahathir Mohamad. Venues include Auditorium, and Laman Seni.

- Activities: Cocktail reception, dinner
- Capacity: 130 (cocktail), 150 (dinner)

MARDI AGRO PARK

At Mardi Agro Park, learn all about tropical fruits and vegetables, how they're grown, how new varieties are introduced, and much more.

- Activities: Cocktail reception, team building
- Capacity: 100–500 pax



LAMAN PADI (RICE MUSEUM)

This is a museum dedicated to the production of rice. The heritage, history and development of the rice industry are documented, and feature active padi fields surrounding the museum. Venues include the Life Museum, Dataran, Rooftop Garden, Seashells Restaurant, Spa & Herbs Garden.

- Activities: Cocktail reception, team building, visit
- Capacity: 150 pax

ADVENTURE CRUISES

Don't limit your options to land – why not take a cruise on the azure waters for a real appreciation of Langkawi – and for a truly memorable event venue here in this tropical island paradise!

- Activities: Cocktail reception, high-tea, dinner
- Capacity: Varies with craft

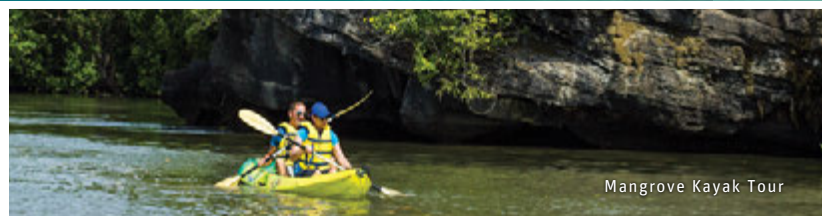


LANGKAWI: A WORLD GEOPARK

In 2007, UNESCO declared the Langkawi archipelago a Global Geopark in recognition of its unique and significant geoheritage features. Geopark status is conferred to promote the conservation of the planet's geological and biological treasures. Almost 100 geo-sites have been identified so far in Langkawi, with three dedicated parks, each with its own unique geological features.



Langkawi Archipelago



Mangrove Kayak Tour



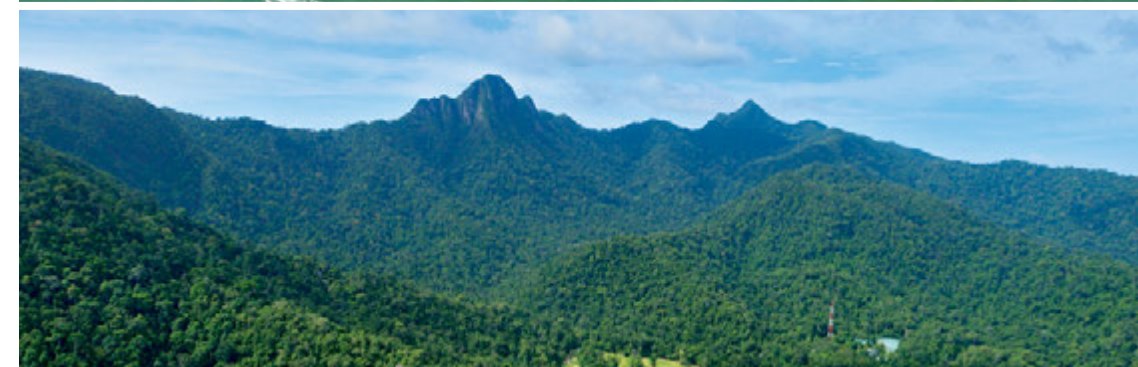
KILIM KARST GEOFOREST PARK

The park includes the Kilim River and estuary. Its extensive mangrove eco-system and unique landscape of pinnacles, cliffs, caves and hills is a nature and adventure lover's delight.



MACHINCHANG CAMBRIAN GEOFOREST PARK

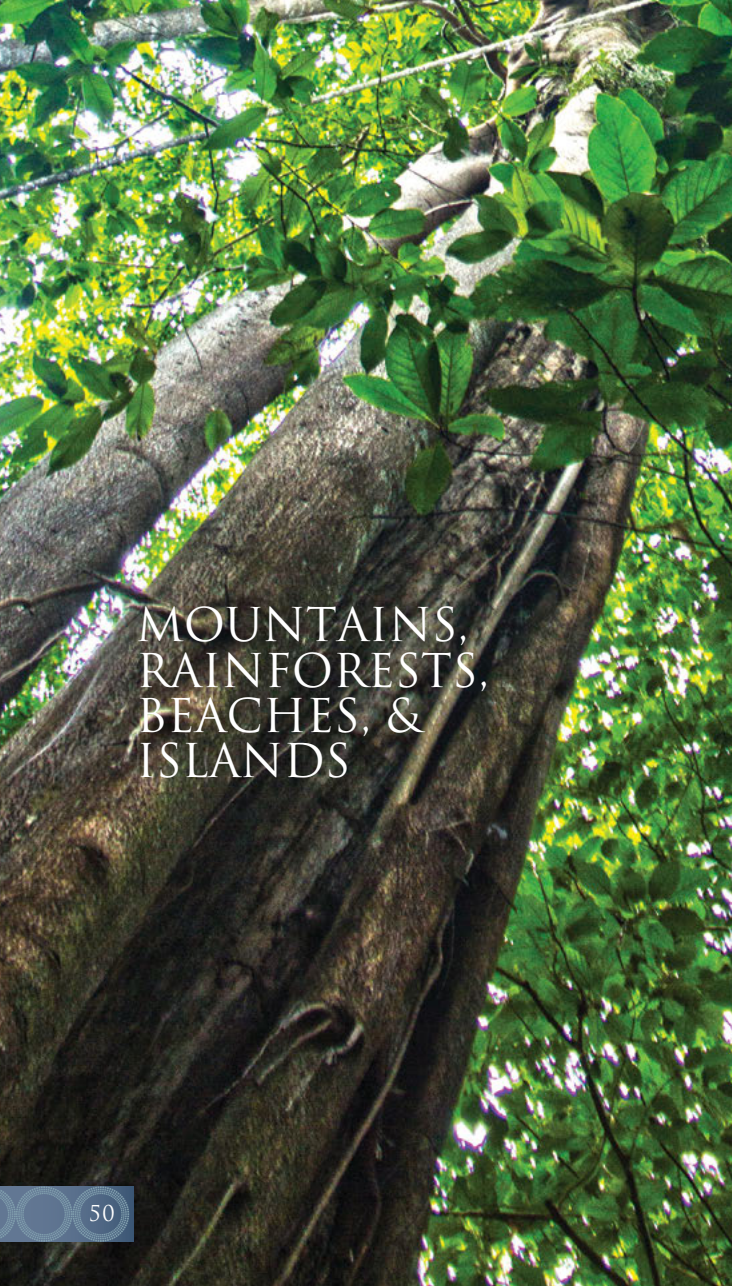
The Machinchang mountain range is renowned for its Cambrian rock formations dating back 550 million years. Machinchang is one of South East Asia's oldest mountain ranges, and home to what is possibly the planet's oldest rainforest.



DAYANG BUNTING MARBLE GEOFOREST PARK

The archipelago's second largest island, Pulau Dayang Bunting ('Island of the Pregnant Maiden') is famous for its fresh water lake nestled amongst hills of rugged forest. Here are found some of the finest Permian marble formations in the world.





MOUNTAINS, RAINFORESTS, BEACHES, & ISLANDS

JUNGLE WALK

For a true appreciation of one of the planet's most impressive environmental treasures, sign up for a jungle walk with one of Langkawi's resident-naturalists, who will provide you with an in-depth experience of the rainforest, its flora and fauna.

BEACHES

Idyllic beaches ('pantai' in Malay) abound in Langkawi. Pantai Cenang and Pantai Tengah are the most developed. For less people and distractions, try Pantai Kok, Teluk Burau, Teluk Datai, the iconic Pantai Tanjung Rhu and Pantai Pasir Tengkorak. For a change in 'colour' there's Pantai Pasir Hitam or Black Sand Beach.

SNORKELLING & SCUBA DIVING

While there are some coral reefs around the main islands, the most developed dive and snorkeling site offering the best visibility is Pulau Payar Marine Park, a one-hour boat journey south of Langkawi.



Gunung Raya



Pantai Kok



Pulau Payar



Langkawi SkyCab

LANGKAWI SKYCAB

Ascend Gunung Machinchang on the famous Langkawi SkyCab, the ultimate cable car adventure. The 2km journey is one of the world's steepest, and the peak, at 713m, offers spectacular 360-degree views of the archipelago and southern Thailand.



Nature Walk on Sky Trails

LANGKAWI SKY TRAILS

Once on top, take the nature trek, or Sky Trails. Enjoy the tour led by experienced guides as they point out exotic flora and fauna, and relate the fascinating geological history all around.

AND MORE ATTRACTIONS

UNDERWATER WORLD LANGKAWI

Experience the largest aquarium in Asia with more than 4,000 marine and freshwater organisms. See turtles, sharks and other marine life eye-to-eye from the walk-through tunnel. Also home to a large collection of Rockhopper and African penguins!



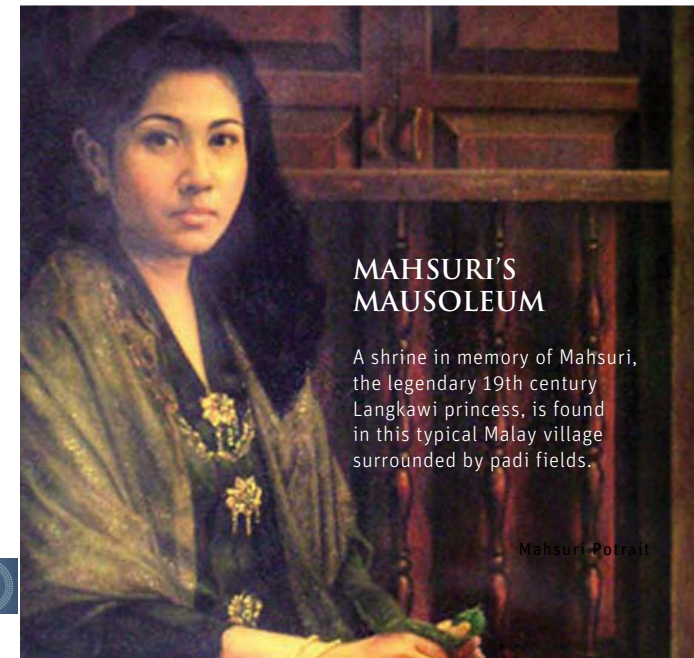
Rockhopper Penguin

EAGLE SQUARE & LEGEND PARK

The iconic 12m high Brahminy Kite (Red-backed Sea Eagle) on the water's edge near the ferry terminal in Kuah is the island's most famous and recognisable symbol. The park is a popular place to stroll and picnic and to view carvings by local artists.



Legend Park



MAHSURI'S MAUSOLEUM

A shrine in memory of Mahsuri, the legendary 19th century Langkawi princess, is found in this typical Malay village surrounded by padi fields.

Mahsuri Portrait



TELAGA HARBOUR PARK

A Mediterranean-themed harbour town, Telaga Harbour Park is located at Pantai Kok, and offers bars, restaurants and shopping.

Telaga Harbour Park

LANGKAWI CRAFT COMPLEX

A centre for the promotion of Malaysian arts & handicrafts – pewter, batik, textiles, beads, basketry, wood products, jewelry and art. Visitors can view artisans at work and buy their handicrafts.



Batik Painting at Langkawi Craft Complex

GOLF

Langkawi features championship golf on three scenic 18-hole courses. Gunung Raya Golf Resort sits at the base of Gunung Raya. For a beautiful seaside game, try the Langkawi 99 East Golf Club. And for postcard forest and shoreline backdrops, The Golf Club Datai Bay is one of Asia's premier courses.



Gunung Raya Golf Club

SUGGESTED ITINERARIES

4 DAYS, 3 NIGHTS

DAY 1 (ARRIVAL)

- Welcome Troupe (cultural performance) at airport or hotel
- Dinner (seafood restaurant)

DAY 2

- CSR activities (involvement with local community)
- Batik painting
- Team building at Laman Padi (traditional activities)
- Sunset cruise

DAY 3

- Mangrove tour
- Ride on the SkyCab summit of Gunung Machinchang
- High-tea

DAY 4

- Depart



Seafood for Dinner



Cultural Performance



Sg. Cenang Fisherman Village



Ride on the SkyCab



Sunset Cruise



Kayak Mangrove Tour

7 DAYS, 6 NIGHTS

DAY 1 (ARRIVAL)

- Welcome Troupe (cultural performance) at airport or hotel
- Dinner (seafood restaurant)

DAY 2

- CSR activities (involvement with local community)
- Batik painting
- Team building at Laman Padi (traditional activities)
- Sunset cruise

DAY 3

- Mangrove tour
- SkyCab cable car to summit of Gunung Machinchang
- High-tea

DAY 4

- Langkawi Wildlife Park
- Kuah (duty free shopping, and Eagle Square)

DAY 5

- Island hopping (Dayang Bunting, Beras Basah, Payar)

DAY 6

- Langkawi Craft Complex
- Jungle Walk

DAY 7

- Depart



Paddle Boat at Tasik Dayang Bunting



Langkawi Wildlife Park



Island Hoping at Pulau Beras Basah



Langkawi Craft Complex



Snorkeling (Pulau Payar)



Jungle walk

MAJOR EVENTS IN LANGKAWI

Royal Langkawi International Regatta

KFC Langkawi International Regatta Perdana

Langkawi International Maritime and Aerospace Exhibition (LIMA)

Langkawi Squid Challenge

IFMA World Championships International Federation Muaythai Amateur

Langkawi International Air & Bike Fest

Langkawi International Laksa Carnival (LILAC)

Langkawi Bazaar Ramadhan

JANUARY

FEBRUARY

MARCH

MARCH

MAY

JUNE

JUNE

JULY



Ironman Malaysia Langkawi

Langkawi International Lawn Bowls (Mahsuri Cup)

Langkawi International Mountain Bike Challenge

Langkawi Art Biennale

World Cup Asia Paintball

Asian Bird Fair

Raja Muda Selangor International Regatta

Langkawi Nature Festival

Langkawi International Junior Tennis Championships

SEPTEMBER

OCTOBER

OCTOBER

OCTOBER

NOVEMBER

NOVEMBER

NOVEMBER

NOVEMBER

DECEMBER



INTERESTED?

THEN LET US TELL YOU ABOUT EVEN MORE
SPECIAL INCENTIVES FOR 2014!

We invite you to visit our website at **www.lada.gov.my**. Just give us some general info (all information will be kept in strictest confidentiality) regarding your planned dates, and number of participants. A **Langkawi Development Authority (LADA)** representative will contact you.

Let us show you how **Naturally Langkawi** can also be **Naturally Inspiring** for your next corporate or special event.

Contact us:

LANGKAWI DEVELOPMENT AUTHORITY

Corporate website: www.lada.gov.my/tourism

Tourism website: www.naturallylangkawi.my

Tel: +604 966 7186 / 7187 | Fax: +604 966 1034

E-mail: support@lada.gov.my



Tanjung Malai Jetty



LANGKAWI DEVELOPMENT AUTHORITY

Level 5, LADA Complex, P.O Box 60, Jalan Persiaran Putra, 07000 Langkawi, Kedah, Malaysia.

Tel | +604 966 7186 Fax | +604 966 2879 Email | support@lada.gov.my

FOLLOW and **LIKE** us at:  Naturallylangkawi  @nat_langkawi  tripadvisor.com.my/langkawi

[DISCLAIMER]

The information and recommendations contained herein are accurate as of the date of publication. All information is subject to change without notice. This brochure served as general guideline and Langkawi Development Authority shall be free of any rightful claim in any circumstances or events related to any information in this brochure.